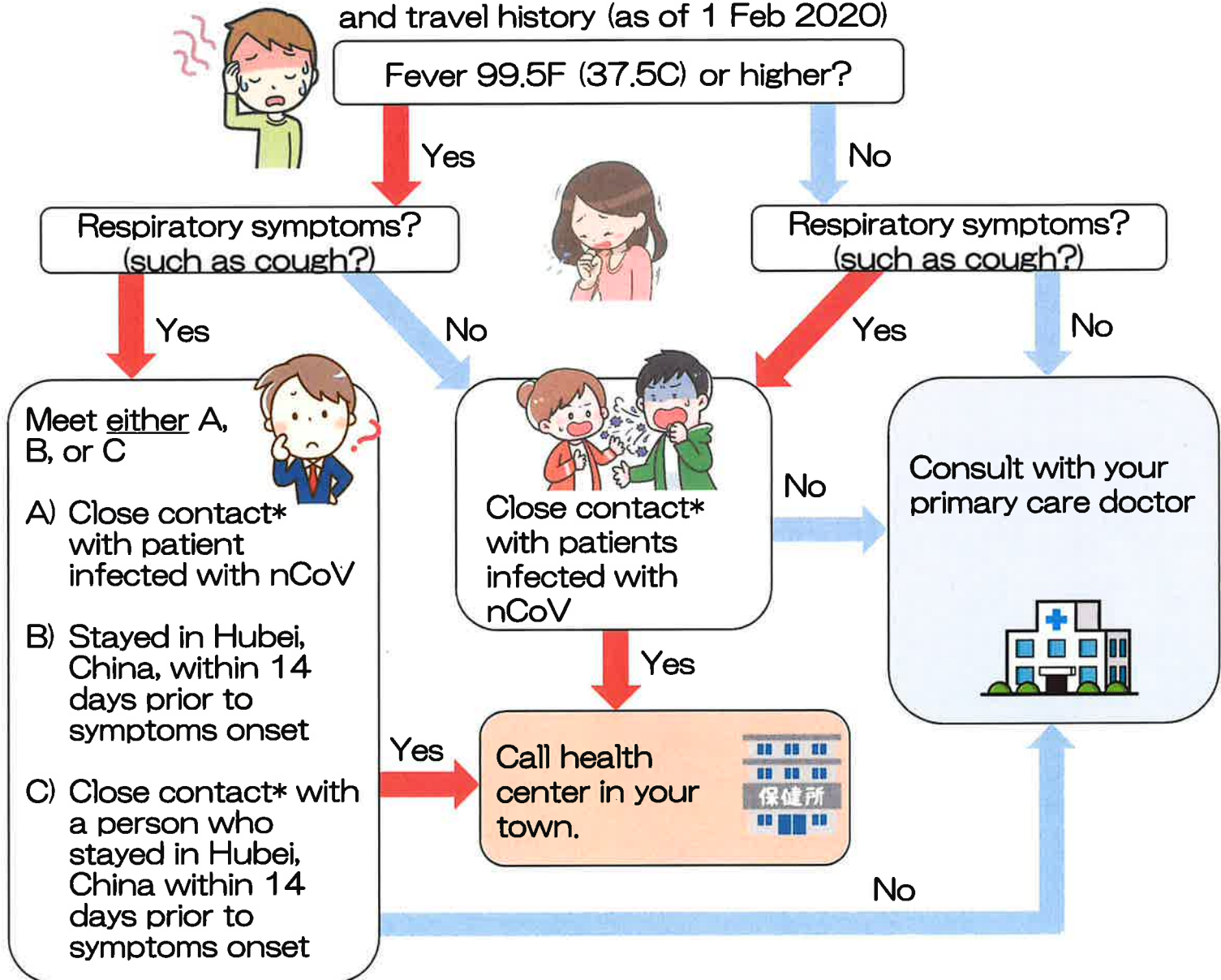


If you think you are infected with nCoV...

Select "Yes" or "No" from your symptoms, contact history, and travel history (as of 1 Feb 2020)



*Close contact means:

1. Living with the suspected patients or prolonged contact with them (in a car, on an airplane, etc.)
1. Caring for suspected patients without proper PPE
2. Highly likely to have directly touched the patient's sputum or saliva

If you suspect you are infected, first call your local health center (HC) before visiting the hospital. The public health centers will ensure suspected patients will be connected to the proper medical institutions. In some cases, we may ask you to see a general clinic if it is considered appropriate.

Health Centers

North HC	0980-52-5219	Miyako HC	0980-73-5074
Chubu HC	098-938-9701	Yaeyama HC	0980-82-4891
South HC	098-889-6591	Naha City HC	098-853-7971